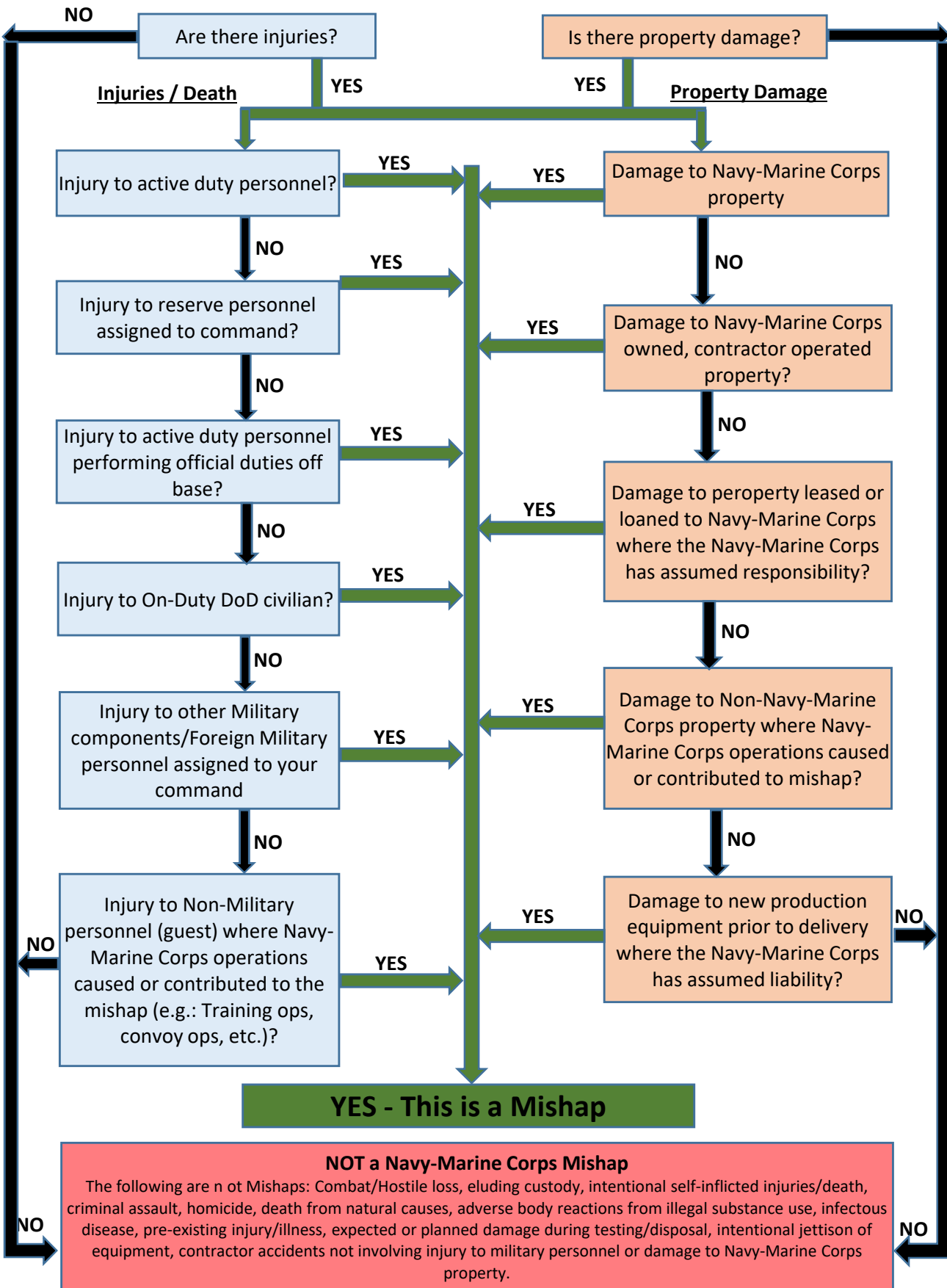


Is this a Navy - Marine Corps Mishap



YES - This is a Mishap

NOT a Navy-Marine Corps Mishap

The following are not Mishaps: Combat/Hostile loss, eluding custody, intentional self-inflicted injuries/death, criminal assault, homicide, death from natural causes, adverse body reactions from illegal substance use, infectious disease, pre-existing injury/illness, expected or planned damage during testing/disposal, intentional jettison of equipment, contractor accidents not involving injury to military personnel or damage to Navy-Marine Corps property.

MISHAP CLASSIFICATIONS

Mishap Class	Property Damage	Injury or Illness
A	\$2,500,000 or Greater	Fatality Or Injury or occupational related illness causing Permanent Total Disability (PTD)
B	\$600,000 to 2,499,999	Hospitalization of 3 or more personnel ** in same mishap or Injury or occupational related illness causing Permanent Partial Disability (PPD)
C	\$60,000 to \$599,999	Individual Injury causing a minimum of one (1) lost workday, including weekends. or Occupational related illness or injury causing a Minimum of (1) lost workday, including weekends. Lost workdays *** include; - SIQ for 24 hours or more - Hospitalization beyond the day of mishap - Mishap related convalescent leave
D	\$25,000 to \$59,999	- Nonfatal injury or illness resulting in restricted work, transfer to another job, (e.g. Light Duty, Limited Duty) - Medical treatment greater than first aid, - Needle stick injuries and cuts from sharps that Are contaminated from another person's blood or other potentially infectious material, - Medical removal under medical surveillance Requirement of an OSHA standard, - Occupational hearing loss, - A work-related tuberculosis case
Other	- \$5,000 to \$24,999 in GMV/GVO damage (includes collateral damage costs to other property) - Man Overboard without injury (requires HAZREP)	
NOTE: Classification threshold changes in effect as of 1 Oct 2019 IAW ALSAFE 19/016		

MCO P5102.1B, Chapter 2 and Glossary G-1 (pages G1-3 to G1-4), DODI 6055.07 page 50:

Permanent Total Disability.

Any nonfatal injury or occupational illness that in the opinion of competent medical authority permanently or totally incapacitates a person to the extent that he or she cannot follow any gainful occupation and results in a medical discharge or civilian equivalent. Also, the loss of the following body parts or the use thereof during a single mishap is a permanent total disability:

- (1) Both hands
- (2) Both feet
- (3) Both eyes
- (4) A combination of any two of these body parts.

Permanent Partial Disability. An Injury or occupational illness that Results in permanent impairment or Loss of any part of the body (e.g. Loss of the great toe, thumb, or a non-repairable inguinal hernia, traumatic acute hearing loss of 10 dB or greater documented by medial authority)

Exceptions include the following:

- (1) Loss of teeth
- (2) Loss of tips of fingers/toes **without** bone loss
- (3) Repairable hernia
- (4) Disfigurement
- (5) Sprains or strains that do not cause permanent limitation of motion.

** Personnel: See MCO P5102.1B, page G1-23

*** Lost Workdays or Days Away From Work. (See MCO P5102.1B, page G1-19, par

MISHAP CLASSIFICATION AND REPORTING MATRIX

Mishap Class	Mishap Severity	On/Off Base	Applicable Personnel	SIB Req'd?	Required Reports					References
					PCR (S-1)	OPREP-SIR (S-3)	Flash Rep (Safety)	WESS SIREP (Safety)	7/8 Day (C.O.)	
A	\$2,5 million or Greater in property damage Or Fatality Or Injury or occupational related illness causing Permanent Total Disability (PTD)	On Base	On Duty Military, DoD Civilians, Contractors under direct supervision	YES	YES	YES	CMD Dependent	YES	Yes	Ref. 1: MCO 3040.4E (Casualty Reporting) Ref. 2: MCO 3504.2 (OPREP-3 Reporting) Ref 3: MCO P5102.1B (Mishap reporting)
			Off Duty Military	YES	YES	See ref. 2	CMD Dependent	YES	Yes	
			Anyone involved with DoD Activity, operations, or evolution	YES	YES	YES	CMD Dependent	YES	Yes	
		Off Base	On Duty Military, DoD Civilians, Contractors under direct supervision	YES	YES	YES	CMD Dependent	YES	Yes	
			Off Duty Military	Not Req'd (NR)	YES	See ref. 2	CMD Dependent	YES	Yes	
			Anyone involved with DoD Activity, operations, or evolution	YES	YES	YES	CMD Dependent	YES	Yes	
B	\$600,000 to 2,499,999 in property damage Or Hospitalization of 3 or more personnel in same mishap (On or Off duty status) Or Injury or occupational related illness causing Permanent Partial Disability (PPD)	On Base	On Duty Military, DoD Civilians, Contractors under direct supervision	See Notes 1&2	Yes See ref. 1	YES	CMD Dependent	YES	Yes	Ref. 1: MCO 3040.4E (Casualty Reporting) Ref. 2: MCO 3504.2 (OPREP-3 Reporting) Ref 3: MCO P5102.1B (Mishap reporting)
			Off Duty Military	NR	YES	See ref. 2	CMD Dependent	YES	Yes	
			Anyone involved with DoD Activity, operations, or evolution	See Notes 1&2	Yes See ref. 1	YES	CMD Dependent	YES	Yes	
		Off Base	On Duty Military, DoD Civilians, Contractors under direct supervision	See Notes 1&2	Yes See ref. 1	YES	CMD Dependent	YES	Yes	
			Off Duty Military	NR	YES	See ref. 2	CMD Dependent	YES	Yes	
			Anyone involved with DoD Activity, operations, or evolution	See Notes 1&2	Yes See ref. 1	YES	CMD Dependent	YES	Yes	

MISHAP CLASSIFICATION AND REPORTING MATRIX

C	\$60,000 to \$599,999 in property damage Or Individual Injury causing a minimum of one (1) lost workday, including weekends. (Off-Duty Military) Or Occupational related illness or injury causing a Minimum of (1) lost workday, including weekends. Lost workdays *** include; - SIQ for 24 hours or more - Hospitalization beyond the day of mishap - Mishap related convalescent leave	On Base	On Duty Military, DoD Civilians, Contractors under direct supervision	See Note 2	See Ref. 1	YES	CMD Dependent	YES	NR	Ref. 1: MCO 3040.4E (Casualty Reporting) Ref. 2: MCO 3504.2 (OPREP-3 Reporting) Ref 3: MCO P5102.1B (Mishap reporting)
			Off Duty Military	NR	YES	See ref. 2	CMD Dependent	YES	NR	
			Anyone involved with DoD Activity, operations, or evolution	See Note 2	See Ref. 1	YES	CMD Dependent	YES	NR	
		Off Base	On Duty Military, DoD Civilians, Contractors under direct supervision	See Note 2	See Ref. 1	YES	CMD Dependent	YES	NR	
			Off Duty Military	NR	YES	See ref. 2	CMD Dependent	YES	NR	
			Anyone involved with DoD Activity, operations, or evolution	See Note 2	See Ref. 1	YES	CMD Dependent	YES	NR	

D	Any reportable/recordable mishap that does not meet the threshold of Class C, B, or A. \$25,000 to \$59,999 in property damage Or - Nonfatal injury or illness resulting in restricted work, transfer to another job, (e.g. Light Duty, Limited Duty) - Medical treatment greater than first aid, - Needle stick injuries and cuts from sharps that are contaminated from another person's blood or other potentially infectious material, - Medical removal under medical surveillance requirement of an OSHA standard, - Occupational hearing loss, - A work-related tuberculosis case	On Base	On Duty Military, DoD Civilians, Contractors under direct supervision	See Note 2	See Ref. 1	See ref. 2	CMD Dependent	YES	NR	Ref. 1: MCO 3040.4E (Casualty Reporting) Ref. 2: MCO 3504.2 (OPREP-3 Reporting) Ref 3: MCO P5102.1B (Mishap reporting)
			Off Duty Military	NR	See Ref. 1	NR	CMD Dependent	YES	NR	
			Anyone involved with DoD Activity, operations, or evolution	See Note 2	See Ref. 1	See ref. 2	CMD Dependent	YES	NR	
		Off Base	On Duty Military, DoD Civilians, Contractors under direct supervision	See Note 2	See Ref. 1	See ref. 2	CMD Dependent	YES	NR	
			Off Duty Military	NR	See Ref. 1	NR	CMD Dependent	YES	NR	
			Anyone involved with DoD Activity, operations, or evolution	See Note 2	See Ref. 1	See ref. 2	CMD Dependent	YES	NR	

MISHAP CLASSIFICATION AND REPORTING MATRIX

Mishap Category	Mishap Description	Location	Personnel		Reporting Criteria	Command	Fatalities	Injuries	Reporting Reference	
			On Duty	Off Duty						
Other Reportable	<p>NOTE: Any of these may or may not meet the criteria of a Class A, B, C, D.</p> <ul style="list-style-type: none"> Any GMV or GOV mishap causing \$5,000 damage (military and civilian total costs). Fatality or PPD of non-DoD guest or military dependent as a result of DoD Operation or event. Any parachuting, HRST, or cargo airdrop mishap. Any diving mishap resulting in hyperbaric treatment, CNS, O2 toxicity, or POIs. Loss of one training day or rollback in a high-risk course. All explosive mishaps Any man overboard (Chapter 4). 	On Base	On Duty Military, DoD Civilians, Contractors under direct supervision	See Note 2	See Ref. 1	See ref. 2	CMD Dependent	YES	NR	Ref. 1: MCO 3040.4E (Casualty Reporting) Ref. 2: MCO 3504.2 (OPREP-3 Reporting) Ref 3: MCO P5102.1B (Mishap reporting)
			Off Duty Military	NR	See Ref. 1	NR	CMD Dependent	YES	NR	
			Anyone involved with DoD Activity, operations, or evolution	See Note 2	See Ref. 1	See ref. 2	CMD Dependent	YES	NR	
		Off Base	On Duty Military, DoD Civilians, Contractors under direct supervision	See Note 2	See Ref. 1	See ref. 2	CMD Dependent	YES	NR	
			Off Duty Military	NR	See Ref. 1	NR	CMD Dependent	YES	NR	
			Anyone involved with DoD Activity, operations, or evolution	See Note 2	See Ref. 1	See ref. 2	CMD Dependent	YES	NR	
First Aid	<p>Individual Injury or Occupational related illness with NO lost work time.</p> <p>See Glossary 1, paragraph 43 and 44 for definition of "First-Aid" (page G1-14)</p>	On Base	On Duty Military, DoD Civilians, Contractors under direct supervision	See Note 2	See Ref. 1	See ref. 2	CMD Dependent	NR	NR	Ref. 1: MCO 3040.4E (Casualty Reporting) Ref. 2: MCO 3504.2 (OPREP-3 Reporting) Ref 3: MCO P5102.1B (Mishap reporting)
			Off Duty Military	NR	See Ref. 1	NR	CMD Dependent	NR	NR	
			Anyone involved with DoD Activity, operations, or evolution	See Note 2	See Ref. 1	See ref. 2	CMD Dependent	NR	NR	
		Off Base	On Duty Military, DoD Civilians, Contractors under direct supervision	See Note 2	See Ref. 1	See ref. 2	CMD Dependent	NR	NR	
			Off Duty Military	NR	See Ref. 1	NR	CMD Dependent	NR	NR	
			Anyone involved with DoD Activity, operations, or evolution	See Note 2	See Ref. 1	See ref. 2	CMD Dependent	NR	NR	

- NOTES:** Always use the SECNAVINST 5102.1B to verify reporting criteria for specific mishaps.
 A Safety Investigation Board (SIB) is also required for:
- Hospitalization, beyond observation, of 3 or more personnel, at least 1 is a DoD civilian), involved in a single mishap.
 - All explosives related mishaps, all ordnance impacting off range, and all live fire mishaps resulting in an injury.

